



Tower One, The Corniche, Nine Elms
London SE1

GARTON JONES.COM



Tower One, The Corniche, Nine Elms London, SE1

GARTON JONES.COM

9 Albert
Embankment
London
SE1 7SP

Sales +44 (0) 20 7735 1888
nineelms@gartonjones.com
www.gartonjones.com

£725,000 Leasehold

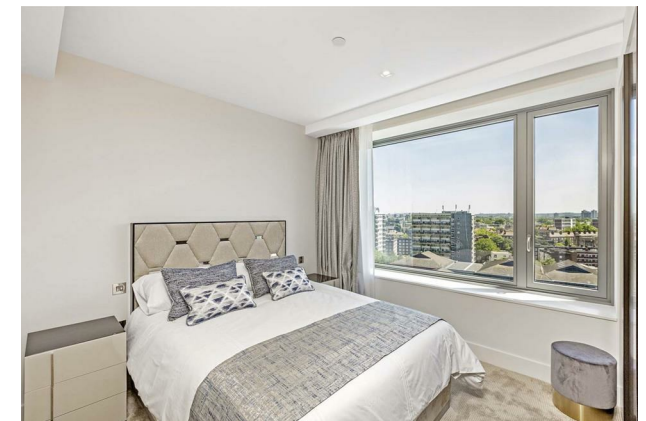
A spacious 1 double bedroom Type 3 apartment of approx. 526sq.ft (48.87sq.m) on the 11th floor (with lift) of Tower One of this landmark development by St James, located on the South Bank of the River Thames. This property further benefits from an open plan reception room with fully fitted interior designed kitchen with Miele appliances, a luxury bathroom suite, utility cupboard and further storage. Designed by the internationally acclaimed architectural practice, Foster and Partners, residents will also have exclusive access to a 19th floor Skyline Club Lounge, an extensive health and wellness suite offering spa treatments, a gymnasium with private training facilities and an indoor infinity pool plus a screening room. Property is furnished to an extremely high standard.

Lease: 999 Years

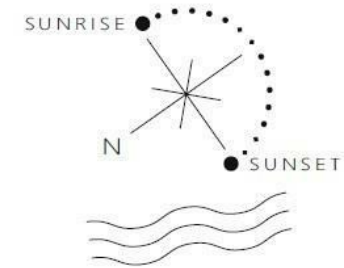
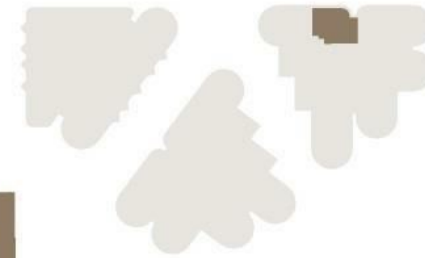
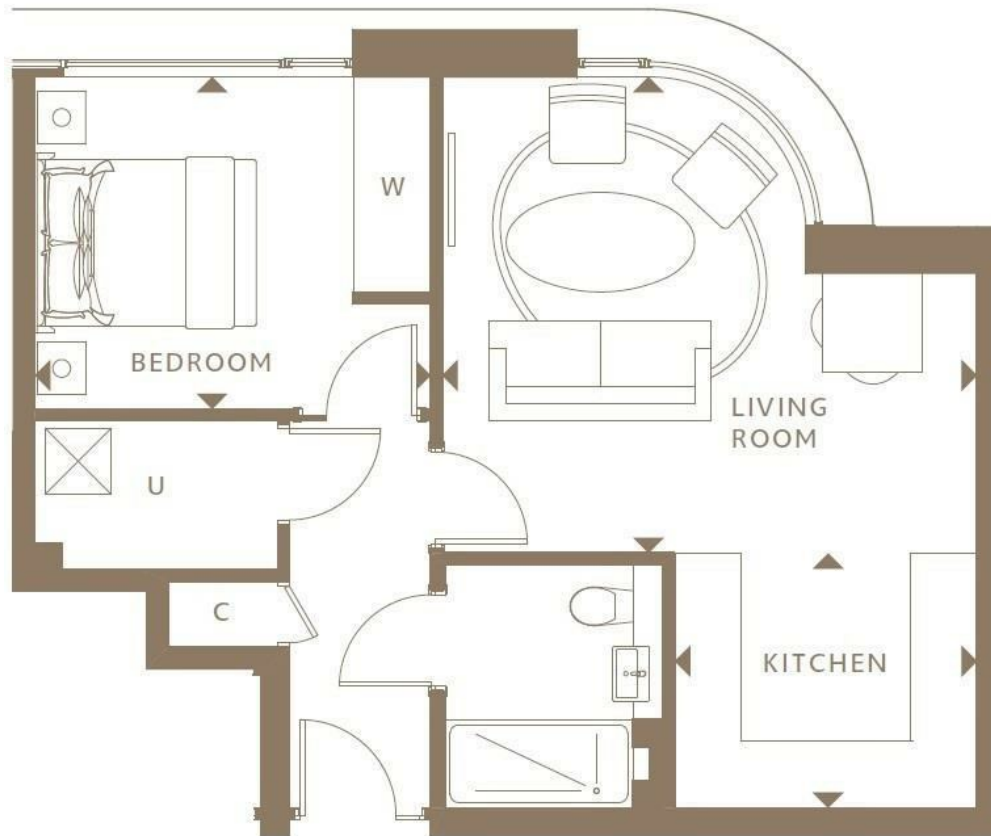
Estimated Service Charge: £7-£7.20psf

Ground Rent: £500pa

- 526sq.ft (48.87sq.m)
- 1 Double Bedroom
- South Facing Aspect
- 11th Floor (with lift) of 15
- Luxury Bathroom
- Open Plan Reception Room with Smart Integrated Kitchen
- 24 Hour Concierge
- Residents Skyline Club Lounge, Infinity Pool, Spa and Screening Room
- Close to The Excellent Transport Links of Vauxhall
- Property is sold Fully Furnished



EPC certificate available on request.



TYPE 3		
Living Room	4.83 x 4.30m	15'1" x 14'1"
Kitchen	2.73 x 2.30m	9'0" x 7'7"
Bedroom	3.57 x 3.00m	11'9" x 9'10"
Total Internal Area	48.87 m²	526.0 ft²

